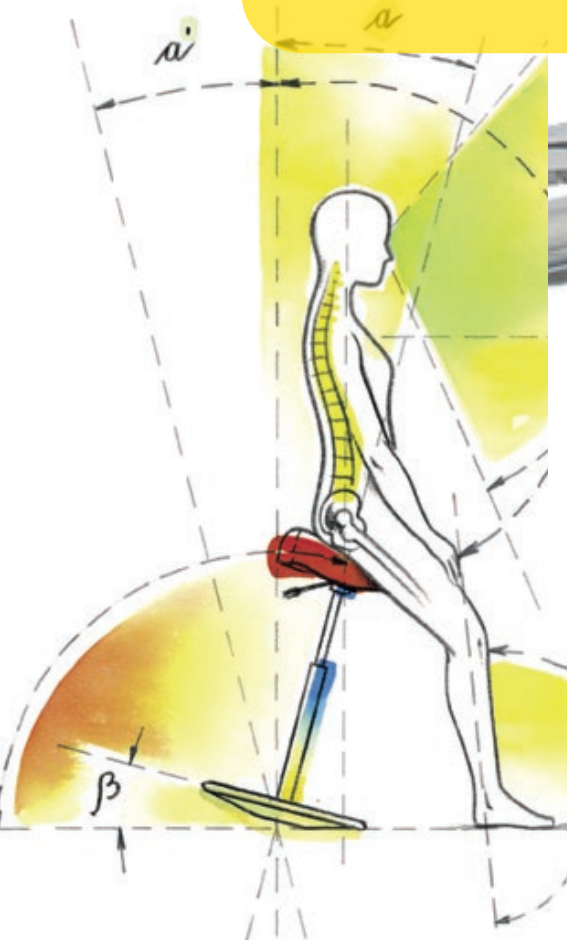
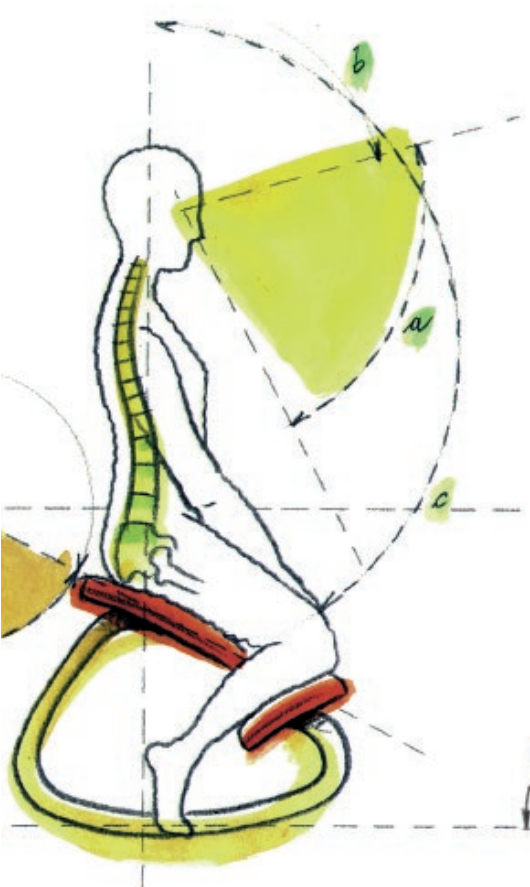




ERGONOMIC CHAIRS

DMR



ERGONOMIC CHAIRS/FOR PRODUCTION LINES

A serie of seats, stools, chairs and standing Aid for production lines, warehouses, workplaces situated in front of machineries. Their main characteristic is their 5-star curved base, for a safe stability in a small space. Their base is coated with a special charcoal grey paint that is highly resistant to bumps and scratches. The space under their base facilitates the floor cleaning. This line includes different types of padded seats, made of wood, pu-soft polyurethane and polypropylene, in order to meet the needs of production environments that are different from each other. Seats and stools with backrest are equipped with easy and fast adjustments. Standing Aid model is especially suitable for workstations where operators must move often during the stages of production, because it provides a good support, that reduces fatigue, even if it promotes an almost standing position, that is necessary when people are faced with certain machineries.

PU-SOFT material seat

100% Integral polyurethane

Ozone depletion potential ODP = 0

Product in the absence of CFC/HCFC

Maintenance: Cleaning and washing with a damp sponge and neutral detergents for daily use. Sanitation is also possible with clinic and hospital products.



Black BLK



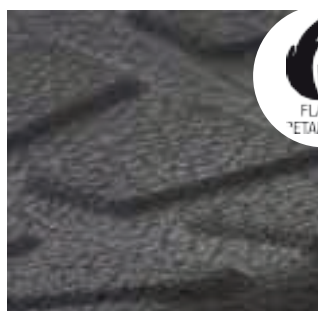
ESD PU-SOFT material seat

Integral polyurethane/Carbon

Ozone depletion potential ODP = 0

Product in the absence of CFC/HCFC

Maintenance: Cleaning and washing with a damp sponge and neutral detergents for daily use. Sanitation is also possible with clinic and hospital products.



Black BLK-ESD

The base is raised from the floor and facilitates cleaning operations. Accurate and strong welds resist for a long time to bumps and stresses.

IMPORTANT INFORMATION

The above-mentioned cleaning recommendations, based on our experience comply with the latest technologies, they are not binding. They do not relieve buyer of the responsibility to check the suitability of material for its intended application. This applies especially to environments where a constant use of detergents is required.

Certain clothing or accessories dyes (such as those used in denim jeans) can migrate on the lighter colours. This phenomenon is increased by humidity and temperatures, and is an irreversible process.

DMR does not assume any responsibility for dyes migration caused by external contaminants, and for any possible permanent stains due to this phenomenon.

Detecting colour differences among the different stocks is considered as normal.

Colours printing reproduction is to be considered as a guideline, variations compared to the original colours may be possible. In case of any doubts, we suggest you to contact us to have a chosen fabric sample before you order the finished product.



ERGONOMIC CHAIRS/FOR PRODUCTION LINES

Production

Swivel chair with a 5-star base **ITEM 0902P** made of nylon (technopolymer) with 600 mm diameter. **Without armrests**; gas lift with black painted cylinder cover. Available in 3 heights (see the indicated sizes). **Gas lift, low version** always equipped with wheels. **Gas lift, high version** always equipped with skates (wheels only on request). It can be accessorized (see accessories and prices separately).



Item code	Mec	Description	Height	Characteristics
DMTOOL-VL1510	GS	Gas Lift	40/53 cm	Swivel chair. Seat and backrest in beech plywood, 10 mm thickness. Height adjustable seat with gas piston. Height adjustable backrest with screw handle.



Item code	Mec	Description	Height	Characteristics
DMTOOL-VL1560	GS	Gas Lift	48/68 cm	Swivel chair. Seat and backrest in beech plywood, 10 mm thickness. Height adjustable seat with gas piston. Height adjustable backrest with screw handle.
DMTOOL-VL1570	GS	Gas Lift	58/83 cm	



Item code	Mec	Description	Height	Characteristics
DMTOOL-TL1811	PC	Permanent-Contact	41/54 cm	Swivel chair. Soft PU-SOFT seat and backrest with anti-slip shape and GRIP. Height adjustable seat. Backrest adjustable in height and inclination. Available versions are PC Permanent-Contact and AS3 with A-Synchron 3 Lever mechanism and independent movement of seat and backrest.
DMTOOL-TL1813	AS3	A-Synchron3 Lever	43/56 cm	



Item code	Mec	Description	Height	Characteristics
DMTOOL-TL1861	PC	Permanent-Contact	49/69 cm	Swivel chair. Soft PU-SOFT seat and backrest with anti-slip shape and GRIP. Height adjustable seat. Backrest adjustable in height and inclination. Available versions are PC Permanent-Contact and AS3 with A-Synchron 3 Lever mechanism and independent movement of seat and backrest.
DMTOOL-TL1863	AS3	A-Synchron3 Lever	51/71 cm	



Item code	Mec	Description	Height	Characteristics
DMTOOL-TL1871	PC	Permanent-Contact	59/84 cm	Swivel chair. Soft PU-SOFT seat and backrest with anti-slip shape and GRIP. Height adjustable seat. Backrest adjustable in height and inclination. Available versions are PC Permanent-Contact and AS3 with A-Synchron 3 Lever mechanism and independent movement of seat and backrest.
DMTOOL-TL1873	AS3	A-Synchron3 Lever	61/86 cm	

ERGONOMIC CHAIRS/FOR PRODUCTION LINES

Production. Swivel chair with a 5-star base **ITEM 0902P** made of nylon (technopolymer) with 600 mm diameter. **Without armrests;** gas lift with black painted cylinder cover. Available in 3 heights (see the indicated sizes). **Gas lift, low version** always equipped with wheels. **Gas lift, high version** always equipped with skates (wheels only on request). It can be accessorized (see accessories and prices separately).



Item code	Mec	Description	Height	Characteristics
DMTOOL-WG1813	AS3	A-Synchron3 Lever	42/55 cm	Swivel chair. PU-Soft-Touch plaid seat mm 390x390. Extra soft. Height adjustable seat. Backrest adjustable in height and inclination. In AS3 version with A-Synchron 3 Lever mechanism and independent movement of seat and backrest.



Item code	Mec	Description	Height	Characteristics
DMTOOL-WG1863	AS3	A-Synchron3 Lever	50/70 cm	Swivel chair. PU-Soft-Touch plaid seat mm 390x390. Extra soft. Height adjustable seat. Backrest adjustable in height and inclination. In AS3 version with A-Synchron 3 Lever mechanism and independent movement of seat and backrest.
DMTOOL-WG1873	AS3	A-Synchron3 Lever	60/85 cm	

Accessories	Item Code		Description
	M-0302		For wheels application Nylon self-braking F 50 instead of skates for high stools.
	0700		Surcharge for height adjustable footrest application. Cm 46 diameter.
	0902		Polished aluminium base with 600 mm diameter.
	0910GP	H54/79	Metal grey painted 5-star raised base, cm 50 diameter with CHAIR LEG CAPS. It can be applied only on high versions.

Production/Standing Aid

Stool with adjustable saddle **STANDING AID**, swivel with a 5-star base **ITEM 0902P** made of nylon (technopolymer) with 600 mm diameter. Gas lift with black painted cylinder cover. **Gas lift, high version** always equipped with skates. It can be accessorized (see accessories and prices separately).



Item code	Mec	Description	Height	Characteristics
DMTOOL-TL154	IC	Seat inclination	60/85 cm	Swivel stool. Soft PU-SOFT saddle seat. The seat is height adjustable, equipped with negative inclination mechanism and can be locked in all positions.

ERGONOMIC CHAIRS/FOR PRODUCTION LINES

Production/Round saddle seat. Stool with ROUND SADDLE SEAT with mm 390 diameter, swivel with a 5-star base **ITEM 0902P** made of nylon (technopolymer) with 600 mm diameter. Gas lift with black painted cylinder cover. Available in 3 heights (see the indicated sizes). **Gas lift, low version** always equipped with wheels. **Gas lift, high version** always equipped with skates (wheels only on request).



Item code	Mec	Description	Height	Characteristics
DMTOOL-KG141	GS	Gas Lift	41/54 cm	Swivel stool. Polypropylene round saddle seat with mm 390 diameter. Height adjustable seat.



Item code	Mec	Description	Height	Characteristics
DMTOOL-KG143	GS	Gas Lift	49/69 cm	Swivel stool. Polypropylene round saddle seat with mm 390 diameter. Height adjustable seat.
DMTOOL-KG144	GS	Gas Lift	59/84 cm	

Accessories	Item Code		Description
	M-0302		For wheels application Nylon self-braking F 50 instead of skates for high stools.
	0700		Surcharge for height adjustable footrest application. Cm 46 diameter.
	0902		Polished aluminium base with 600 mm diameter.
	0910GP	H54/79	Metal grey painted 5-star raised base, cm 50 diameter with CHAIR LEG CAPS. It can be applied only on high versions.

ESD Laboratory

Conductive/anti-static and swivel chair for laboratory, with a polished aluminium 5-star base **ITEM 0903C** with 700 mm diameter. Without armrests, gas lift with chrome cylinder cover. Available in 3 heights (see the indicated sizes).

Gas lift, low version always equipped with wheels. **Gas lift, high version** always equipped with skates (wheels only on request). It can be accessorized (see accessories and prices separately).






Item code	Mec	Description	Height	Characteristics
DMTOOL-TL1811A	PC	Permanent-Contact	41/54 cm	Swivel chair. Soft PU-SOFT seat and backrest with anti-slip shape and GRIP. Fully wired. Conductive and anti-static for ESD laboratory. Height adjustable seat. Backrest adjustable in height and inclination. Available versions are PC Permanent-Contact and AS3 with A-Synchron 3 Lever mechanism and independent movement of seat and backrest.
DMTOOL-TL1813A	AS3	A-Synchron3 Lever	43/56 cm	



Item code	Mec	Description	Height	Characteristics
DMTOOL-TL1861A	PC	Permanent-Contact	49/69 cm	Swivel chair. Soft PU-SOFT seat and backrest with anti-slip shape and GRIP. Fully wired. Conductive and anti-static for ESD laboratory. Height adjustable seat. Backrest adjustable in height and inclination. Available versions are PC Permanent-Contact and AS3 with A-Synchron 3 Lever mechanism and independent movement of seat and backrest.
DMTOOL-TL1863A	AS3	A-Synchron3 Lever	51/71 cm	
DMTOOL-TL1871A	PC	Permanent-Contact	59/84 cm	

ERGONOMIC CHAIRS/FOR PRODUCTION LINES

Accessories	Item Code		Description
	M-0321		Surcharge for 0,50 mm ESD self-braking wheels application instead of skates for high stools.
	0700ESD		Surcharge for ESD height adjustable footrest application. Cm 46 diameter.
	0860AN		ESD height adjustable armrests pair.

Office

Chair with seat and backrest in beech plywood, coated with PU FLEX.

Base equipped with circular footrest with chrome-plated steel foot ring, with black nylon 5 stars. Gas lift with conical connection central piston with head control.



Product

Sizes

Code DM-TOOL4880

Seat depth from lumbar support	440 mm
Seat depth	470 mm
Seat width	480 mm
Backrest height from seat	420-480 mm
Backrest support	60 mm
Backrest width	430 mm
Seat height	550-800 mm

Office

Chair with seat and backrest in beech plywood, coated with PU FLEX.

Base equipped with circular footrest with chrome-plated steel foot ring, with black nylon 5 stars. Gas lift with conical connection central piston with head control.



Product

Sizes

Code DM-TOOL4880

Seat depth from lumbar support	380 mm
Seat depth	450 mm
Seat width	450 mm
Backrest height from seat	410-480 mm
Backrest support	70 mm
Backrest width	410 mm
Seat height	590-840 mm

ERGONOMIC CHAIRS/FOR H24 PRODUCTION LINES

24-Hour Professional Tech

24-hours excellent level armchairs, with unparalleled performances for their functionality, practicality and resistance over time. "Automotive" derivation of structure makes these models extremely sturdy, comfortable also for prolonged uses, and are adaptable to the ergonomic need of each end user.

Professional chair: equipped with a tilt mechanism, with a range of 16 degrees, its backrest is equipped of another mechanism that allows an additional 22 degrees inclination of it..

Therefore, the overall inclination is 38 degrees. The additional inclination is also guaranteed by a gear mechanism (similar to inclination of car seats) that ensures a firm position. Chair structure allows the fixation of extra components (that is borne by production and assembly of the final customer) to seat steel structure.



Product

Sizes	Code DMRK24EXE
Seat depth from lumbar support	47 cm
Seat depth	51 cm
Seat width	54 cm
Backrest height from seat	65 cm
Backrest width	51 cm
Seat height	44-53 cm

ACCESSORIES

- DMRKK

3D height adjustable headrest (h 100 mm, by means of button with 6 tilt locks), inclination and depth. Safety button to avoid the unintentional removal of the headrest.
- DMRS4

Lumbar support with adjustable height and depth, by means of two handles positioned on the backside of the backrest.

MECHANISMS LEGEND	MECHANISMS	CODE	DESCRIPTION
		GS	GAS LIFT, adjustable height seat.
		IC	SEAT INCLINATION, seat inclination of 2nd positive and 13th negative.
		PC	PERMANENT-CONTACT, backrest inclination of 20 degrees, it can be locked in all positions. Adjustable height backrest by means of a handle. Homologated according to EN 1335-3 rules.
		AS3	A-SYNCHRON TRI-LEVER, backrest inclination of 12th positive and 28th negative, seat inclination of 5th positive and 3rd negative, they can be locked in all positions; with combined activation of seat body oscillation and backrest inclination. Adjustable height backrest by means of a handle.

Seat and backrest made of **PU-SOFT** technical material.

IC: Front tilt mechanism of seat.

GS: Only gas lift mechanism. This chair is suitable to be used in environments where anti-static solutions are required, complying with **EN 100015/1** and **IEC 61340-51** regulations, tested and certified in the following institutes: **Celestica Laboratories**.

CONSTRUCTION TECHNICAL CHARACTERISTICS

Seat Shell: anatomical shape, composed of a recyclable wood support, in which black soft integral polyurethane is integrated.

Homologated mechanisms according to **DIN 4551 test 5-6-3 LGA, ANSI-BIFMA X5.1, BS 5459 A.5.1, A.5.5** and **EN 1335-3** regulations.

IC: Front tilt mechanism of seat, starting from the 2nd positive up to the 13th negative.

GS: Only gas lift mechanism.

Gas lift: Conical connection central piston with head control, mm 28 diameter, protected by a steel cylinder cover with mm 50 diameter, chrome finish. Acceptance test in Class 4. It's homologated according to **DIN 4550** regulation.

Base: It's homologated according to **DIN 4551 test 5-6-3 LGA, ANSI-BIFMA X5.1-2002f7, BS 5459 A.5.1, A.5.5** and **EN 1335-3** regulations.

0902C: Die-cast aluminium with internal reinforced ribs. Brushed and polished finish.

Diameter of 5-star base, mm 600.

Wheels: Ø 50 mm self-braking, conductive and swivel wheels with reinforced nylon structure and wheel rubber ring.

Skates: black nylon (mm 55 height, mm 50 diameter).



ESD CHAIR

Seat and backrest made of **ESD PU-SOFT** technical material.

IC: Front tilt mechanism of seat.

GS: Only gas lift mechanism.

This chair is suitable to be used in environments where anti-static solutions are required, complying with **EN 100015/1** and **IEC 61340-51** regulations, tested and certified in the following institutes:

Celestica Laboratories-ESD Department.

CONSTRUCTION TECHNICAL CHARACTERISTICS

Seat Shell: anatomical shape, composed of a recyclable wood support, in which black soft ESD integral polyurethane is integrated.

Homologated mechanisms according to **DIN 4551 test 5-6-3 LGA, ANSI-BIFMA X5.1, BS 5459 A.5.1, A.5.5** and **EN 1335-3** regulations.

IC: Front tilt mechanism of seat, starting from the 2nd positive up to the 13th negative.

GS: Only gas lift mechanism.

Gas lift: Conical connection central piston with head control, mm 28 diameter, protected by a steel cylinder cover with mm 50 diameter, chrome finish. Acceptance test in Class 4. It's homologated according to **DIN 4550** regulation.

Base: It's homologated according to **DIN 4551 test 5-6-3 LGA, ANSI-BIFMA X5.1-2002/7, BS 5459 A.5.1, A.5.5** and **EN 1335-3** regulations.

0902C: Die-cast aluminium with internal reinforced ribs. Brushed and polished finish.

Diameter of 5-star base, mm 600.

Wheels: Ø 50 mm self-braking, conductive and swivel wheels with reinforced nylon structure and wheel rubber ring.

Skates: black nylon and conductive (mm 55 height, mm 50 diameter).

